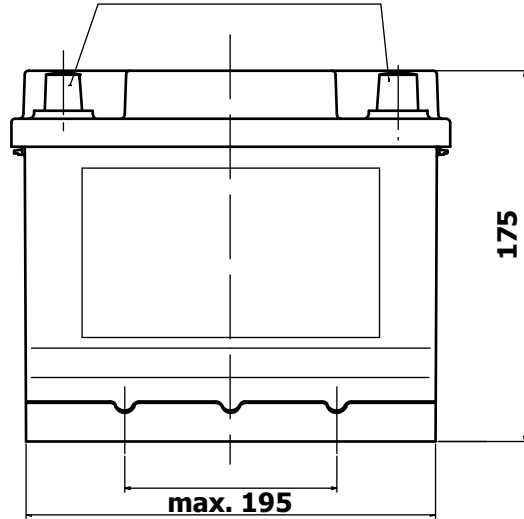


Sonnenschein GF 12 033 Y1, YG1, Y2, YG2

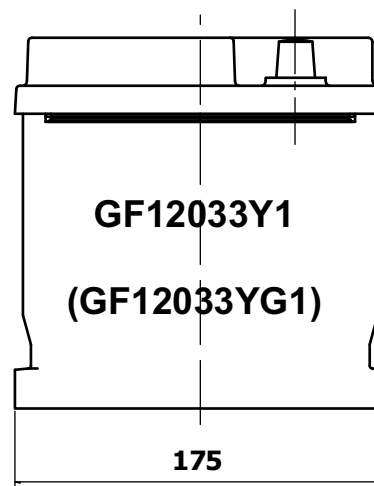
12V 33Ah Gel Type VRLA Battery

12V 33Ah verschlossene gel Technologie

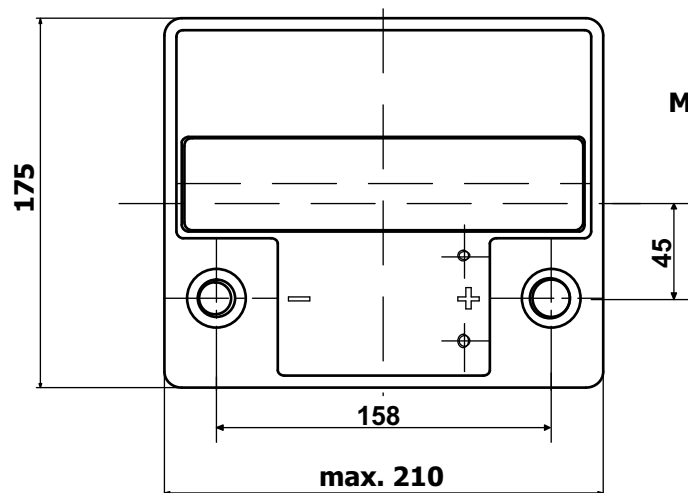
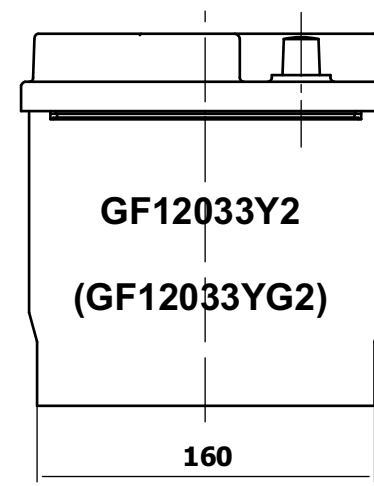
Terminals according EN 60095-2
Pole gemäß EN 60095 T.2



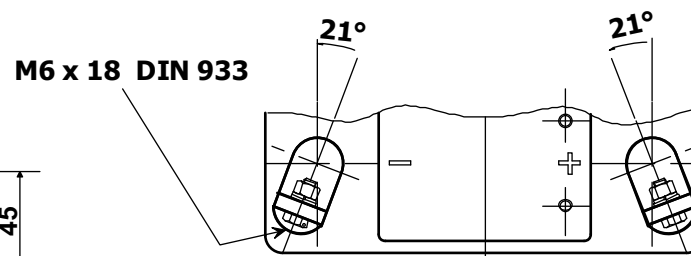
With Holddown / mit Bodenleiste
choice of DIN-A or with G-Terminal
Varianten mit DIN-A und G-Pol



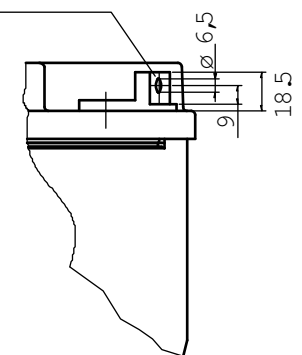
Without Holddown / ohne Bodenleiste
choice of DIN-A or with G-Terminal
Varianten mit DIN-A und G-Pol



Version: G-Terminal (Ford-Flat Terminal)



Version: G-Terminal
drawn without screw



This file is not within the Update procedure
Status: 04-26-2005
Unterliegt nicht dem Änderungsdienst
Stand: 26.04.2000